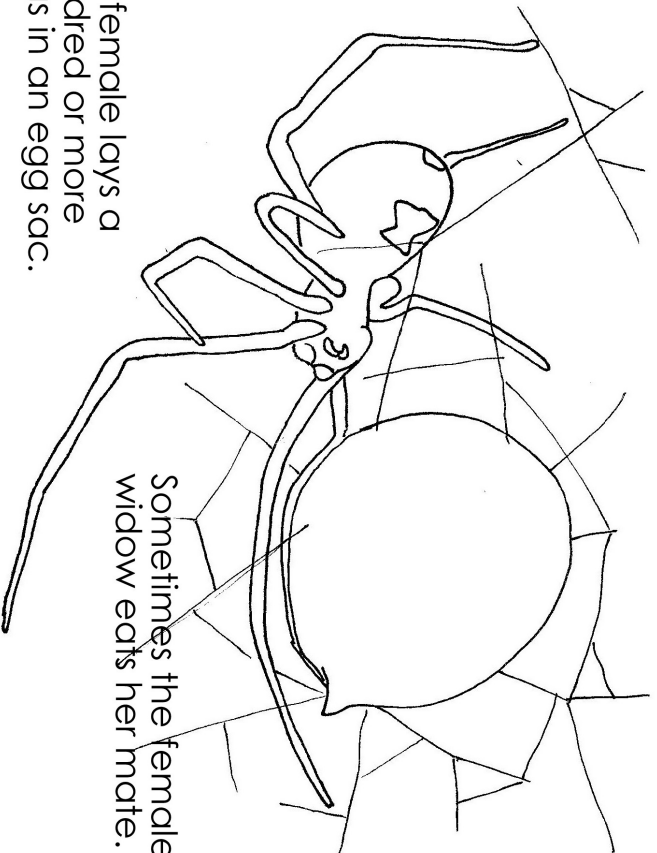


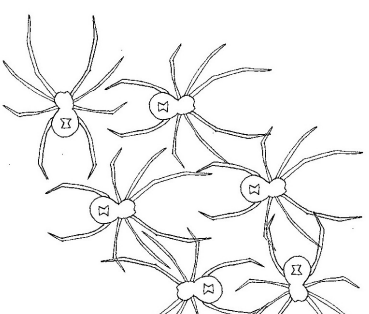
# Life Cycle of a Spider

## Black Widow



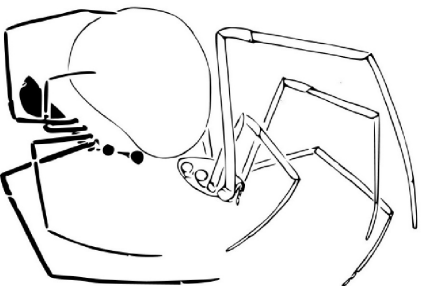
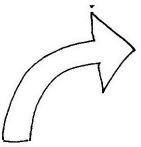
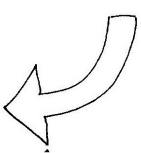
The female lays a hundred or more eggs in an egg sac.

Sometimes the female black widow eats her mate.

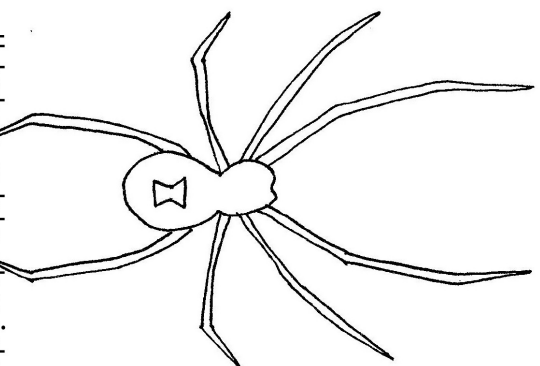
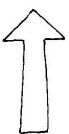


When the baby spiders hatch they look just like their parents except their color is much lighter.

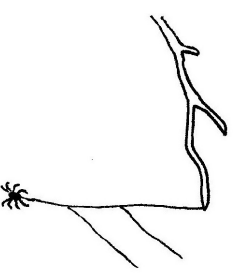
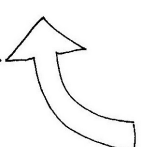
Often the babies eat each other just after hatching.



The male and female mate in spring.



It takes a black widow between 3 and 10 months to mature into an adult.



Baby spiderlings leave the nest by crawling away or ballooning on thin strands of silk.